

# Southside Elementary



## 3<sup>rd</sup> Grade Virtual Open House



# A/B Schedule

- Students assigned to the A schedule, will attend school every Monday and Wednesday and alternating Fridays.
- Students assigned to the B schedule will attend school every Tuesday and Thursday and alternating Fridays.





# A/B Schedule

- The schedule will be posted on SSE's website and Facebook page.
- You will also be provided a paper copy.

<http://www.ssebuccaneers.com>



## PHASE II A-B SCHEDULE

<b>A SCHEDULE</b>	Monday, Wednesday & Every Other Friday
<b>B SCHEDULE</b>	Tuesday, Thursday & Every Other Friday
<b>NO SCHOOL</b>	Labor Day, Teacher Professional Development, Fair Day, Election Day, Thanksgiving, Christmas

Using the Phase 2 LDOE guidelines, the school system can only physically accommodate half of the students on campuses, on any given day, due to transportation restrictions and occupancy restrictions. In this phase, LPPS will follow an A-B model to provide in-person instruction to half of the students in **grades 3 through 12 on alternating days**.

Pre-kindergarten through second grade students, all students with significant disabilities who participate in alternate assessment, students enrolled in a class at the Literacy & Technology Center, and students attending the ELEC Center will report to class daily for face-to-face instruction.

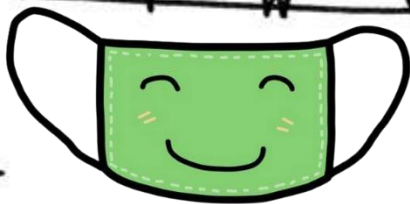
\* This calendar will be followed for the time period Louisiana is in Phase II of the Roadmap to Restarting Louisiana. For convenience, this is laid out for the semester; however, when Louisiana moves into a different phase, the schedule will change. Our goal is to have all students report to campus daily, as soon as possible. \*

AUGUST							SEPTEMBER							OCTOBER							NOVEMBER							DECEMBER						
S	M	T	W	T	F	S	S	M	T	W	T	F	S	S	M	T	W	T	F	S	S	M	T	W	T	F	S	S	M	T	W	T	F	S
						1			1	2	3	4	5					1	2	3	1	2	3	4	5	6	7			1	2	3	4	5
2	3	4	5	6	7	8	6	7	8	9	10	11	12	4	5	6	7	8	9	10	8	9	10	11	12	13	14	6	7	8	9	10	11	12
9	10	11	12	13	14	15	13	14	15	16	17	18	19	11	12	13	14	15	16	17	15	16	17	18	19	20	21	13	14	15	16	17	18	19
16	17	18	19	20	21	22	20	21	22	23	24	25	26	18	19	20	21	22	23	24	22	23	24	25	26	27	28	20	21	22	23	24	25	26
23	24	25	26	27	28	29	27	28	29	30				25	26	27	28	29	30	31	29	30						27	28	29	30	31		
30	31																																	

# Water

- Water fountains are currently disabled.
- Your child will be able to bring a bottle of water to school everyday.
- It can be a plastic water bottle or a reusable water bottle.  
(Please label all water bottles with your child's name.)
- If you would like to donate a case of water  
(for refill purposes) to your child's class, please contact their  
homeroom teacher.





# Masks



-Face coverings must be worn by all adults and students third grade and above, to the greatest extent possible or required if mandated by the most recent Governor's Proclamation and BESE guidance.

-Individuals with severe breathing difficulties should not wear face coverings.

-Face coverings must be school appropriate. Students are allowed choice of color, design, and pattern. Face coverings may reflect student's name or monogram. They should be free of wording, slogan, advertisement, or inappropriate graphics. School logo, name, and/or mascot graphics are allowed. Gaiters-style masks are allowed.

-No bandanas.





# Virtual Learning Days

-Google Classroom: This will be our main platform. All assignments will be posted on Google Classroom on virtual learning days. \*Do not email teachers with the google classroom email address. We do not have access.\*

-FlipGrid: Verbal assignments will be submitted through FlipGrid. It could be something as simple as reading a short passage or answering discussion questions. A link will be provided in Google Classroom to complete FlipGrid assignments.

-Clever: some assignments will be linked to Clever. A link will be provided in Google Classroom.



# Virtual Expectations

## DIGITAL CLASSROOM NORMS PARENT EXPECTATIONS



### ESTABLISH A ROUTINE AT HOME

- Help your student wake up early, get dressed, and eat a healthy breakfast.



### PREPARE A WORKSPACE

- Help your student prepare an area to work on assignments, free from distractions.



### COMMUNICATE WITH FAMILY

- Remind family members when your student's class starts and ends to minimize distractions.



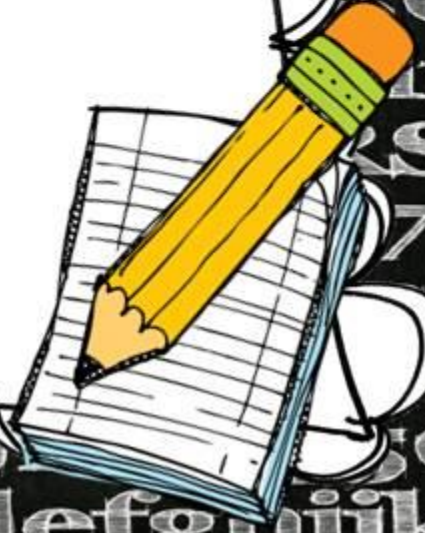
### CHECK ONLINE COMMUNICATIONS

- Keep up to date with your student's assignments and feedback from teachers.



### TECHNOLOGY SUPPORT

- Help ensure students are able to access lessons without any hindrance.



# Virtual Expectations

- All assignments must be completed on virtual days.
- If assignments aren't completed the day they are posted, the student will be marked absent for the day.
- Assignments not completed that are for a grade, will be marked zero until the assignment is completed.

★Grades and attendance will count!★



# Class Dojo

- Class Dojo will be used for communication and behavior purposes.
- Students will be able to earn positive dojo points for participation and good behavior.
- Negative dojo points will be given for the following:
  - Talking out/disruption
  - Disrespectful behavior
  - Lying/Cheating/Profane Language
  - Being off task (sleeping, not following directions, etc.)
  - Throwing things/Touching Others





# Consequences

## -One Negative Dojo Point

-Yellow: Slow Down! The teacher will give the student a warning and remind them of expected behaviors.

## -Two Negative Dojo Points

-Blue: Think About It! The teacher will pull the child aside and have a quick conference to discuss expected behaviors and have the student explain why certain behaviors are important.

## -Three Negative Dojo Points

-Orange: Recess Refocus! Students will not be able to participate in recess.



# Consequences

## -Four Negative Dojo Points

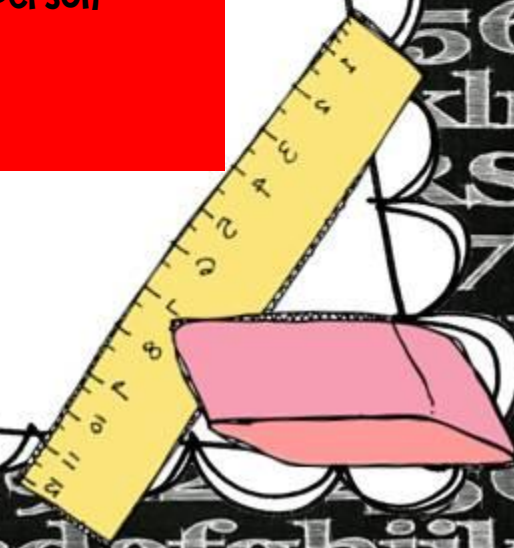
-Pink: Written Reflection! Students will be assigned a written reflection to be completed at home. It must be signed by the parent/guardian.

-If the student does not return by the second day, they will be written up and sent to the office.

## -Five (or more) Negative Dojo Points

-Red: 1<sup>st</sup> offense, the teacher will call and set up an in person conference with the parent to discuss behavior.

-All following offenses will result in an office referral.



# Supplies

- The supply fee for this year is \$50.
- \$25 is due by August 25. The other \$25 is due by January 25. Or you can pay it all at one time.
- The fee covers all class materials needed for learning. (Crayons, notebooks, pencils, etc.)



# Supplies

Supplies not covered by the supply fee:

- Backpack (no wheels, must fit all supplies needed for class)
- 1 container of disinfectant wipes (chlorox, Lysol, or similar brand. No baby wipes please.)
- 1 bottle of GermX or other hand sanitizer (60% alcohol or more is best.)
- 2 boxes of Kleenex or facial tissue
- 1 roll of paper towels
- Boys: 1 box of quart size Ziploc bags
- Girls: 1 box of gallon size Ziploc bags

\*If you can't find something on the list, please just send it when you can

find it.



# Teacher Information



Leah Davis: ELA and Social Studies  
[-leah.davis@lpsb.org](mailto:-leah.davis@lpsb.org)

Karly Garrett: ELA, Science, and Social Studies  
[karly.garrett@lpsb.org](mailto:karly.garrett@lpsb.org)



Katelynn Payne: Math and Science  
[-katelynn.payne@lpsb.org](mailto:-katelynn.payne@lpsb.org)



Southside Elementary: (225)665-5500

